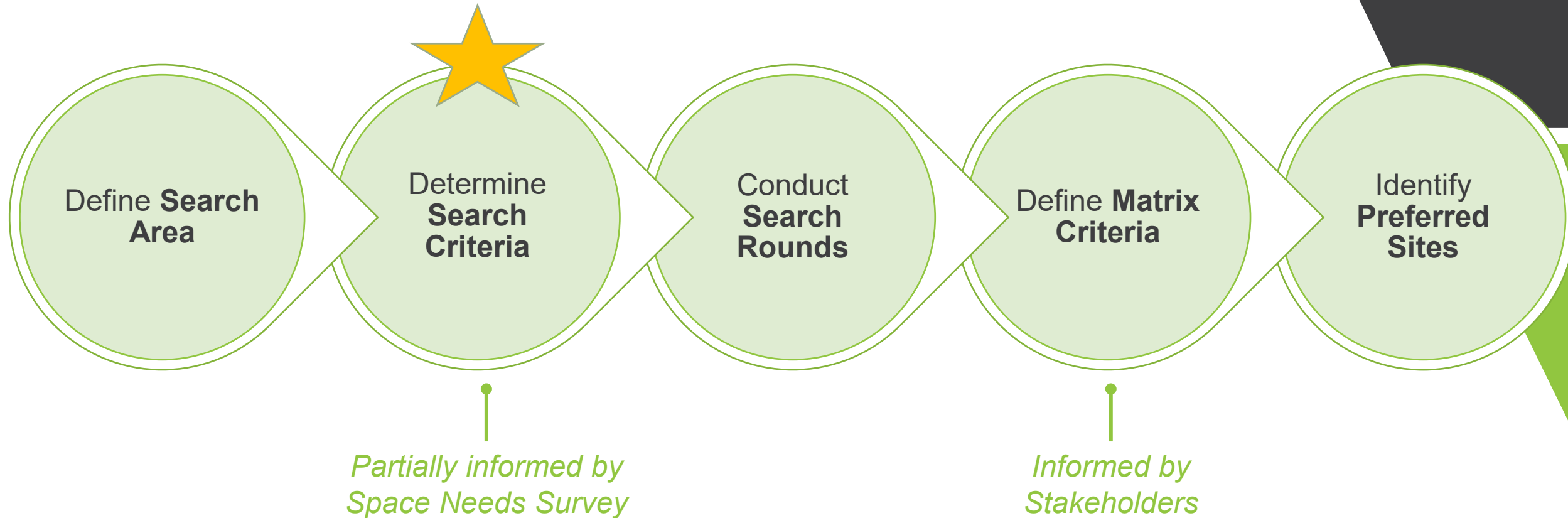


Link Transit Five-Year Transit Development Plan and Transit Facility Study

March 7, 2024



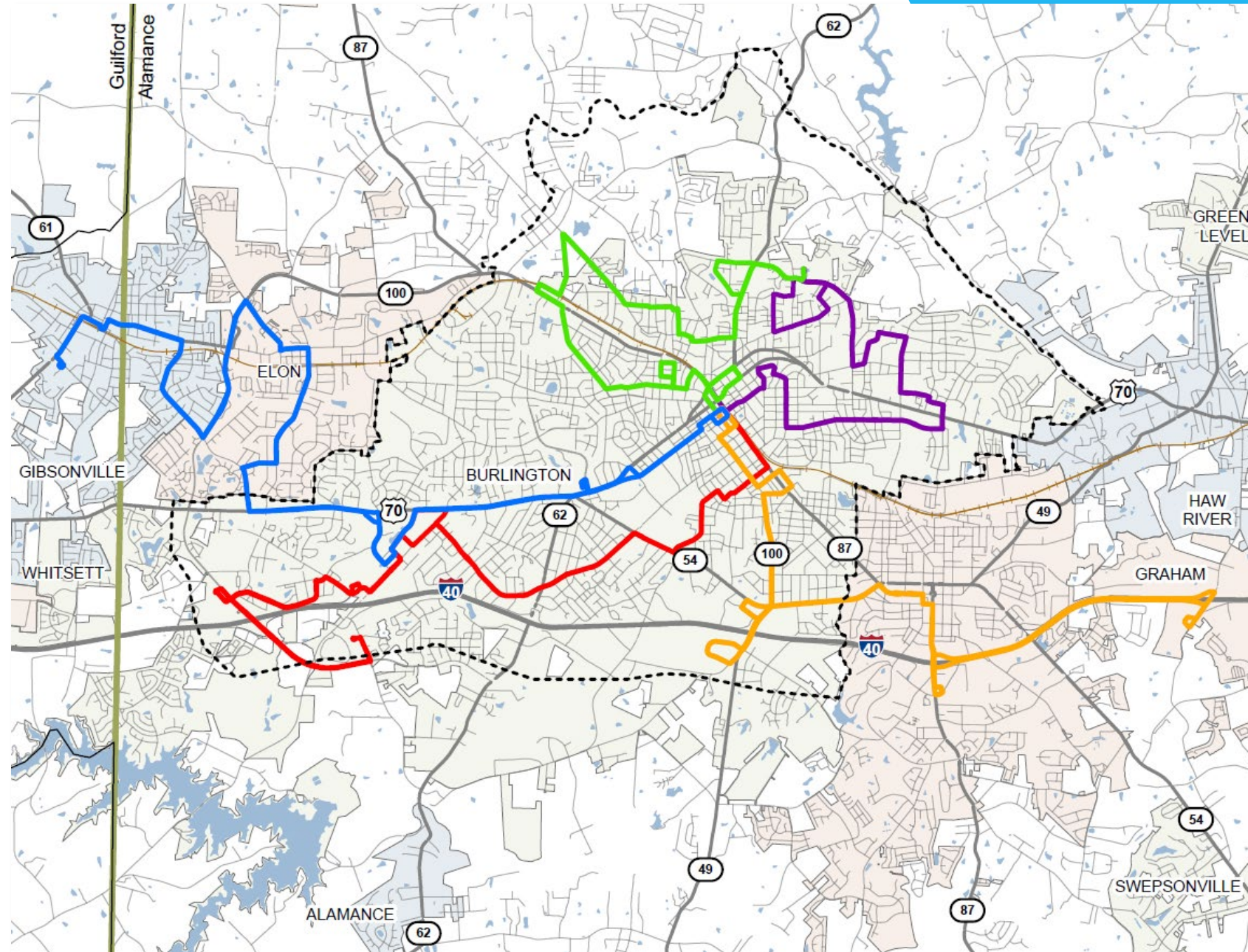
FACILITY SITING PROCESS



SEARCH AREA

Considerations

- Existing service area
- Major roadways/
driving distance
- Burlington City and
ETJ limits



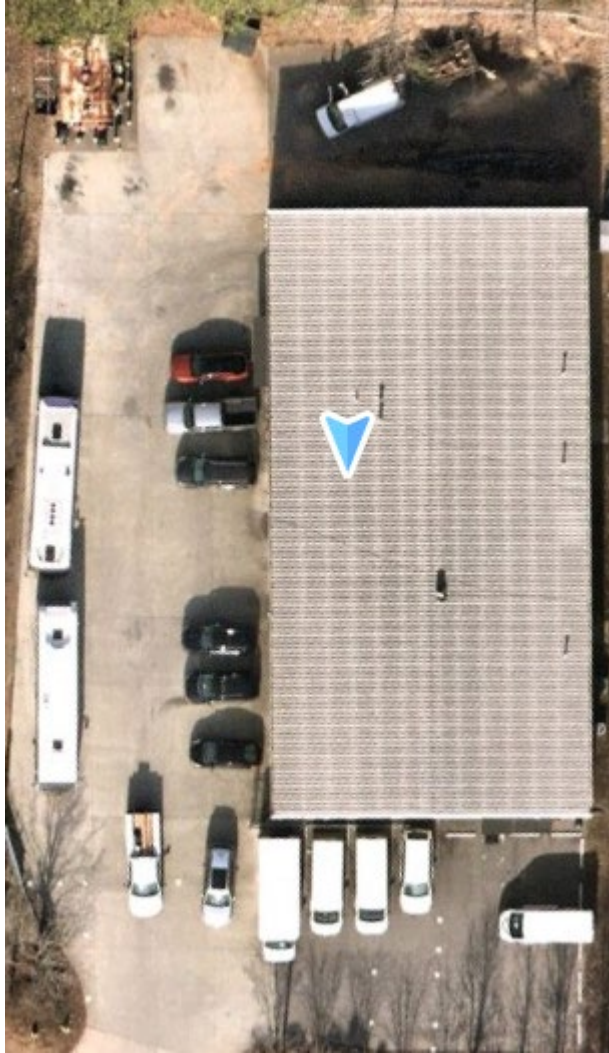
AGENCY REVIEW

City	Ridership (NTD 2022)	Fleet	O&M	Transit Center	Distance Between Sites
Burlington	107,452	<ul style="list-style-type: none"> • 5 LTV and 2 Electric Buses for 5 fixed-routes • 4 shuttle buses for paratransit 	4.7 acres	.08 acres <ul style="list-style-type: none"> • Downtown 	5 miles
Concord	310,432	<ul style="list-style-type: none"> • 10 hybrid buses for 8 fixed-routes • 4 LTVs and 3 vans for paratransit 	.8 acres	2 acres <ul style="list-style-type: none"> • 3 miles north of downtown 	5.6 miles
Cary	279,799	<ul style="list-style-type: none"> • ~24 vehicles • 9 fixed-routes • Paratransit 	3 acres <ul style="list-style-type: none"> • 5.5-acre site selected for new O&M 	3.7 acres <ul style="list-style-type: none"> • Just north of downtown • Includes Amtrak • 12.7-acre site proposed for new multi-modal center 	2.1 miles <ul style="list-style-type: none"> • Planned sites are 2.5 miles
Asheville	1,485,058	<ul style="list-style-type: none"> • 35 vehicles • 18 fixed-routes 	3.4 acres <ul style="list-style-type: none"> • 8 – 10-acre site recommended for new O&M 	.5 acres <ul style="list-style-type: none"> • Downtown 	.7 miles
High Point	606,504	<ul style="list-style-type: none"> • 17 buses for 13 fixed-routes • 6 cutaway vans for paratransit 	3.2 acres	1.04 acres <ul style="list-style-type: none"> • Downtown 	.5 miles

CONCORD – RIDER TRANSIT

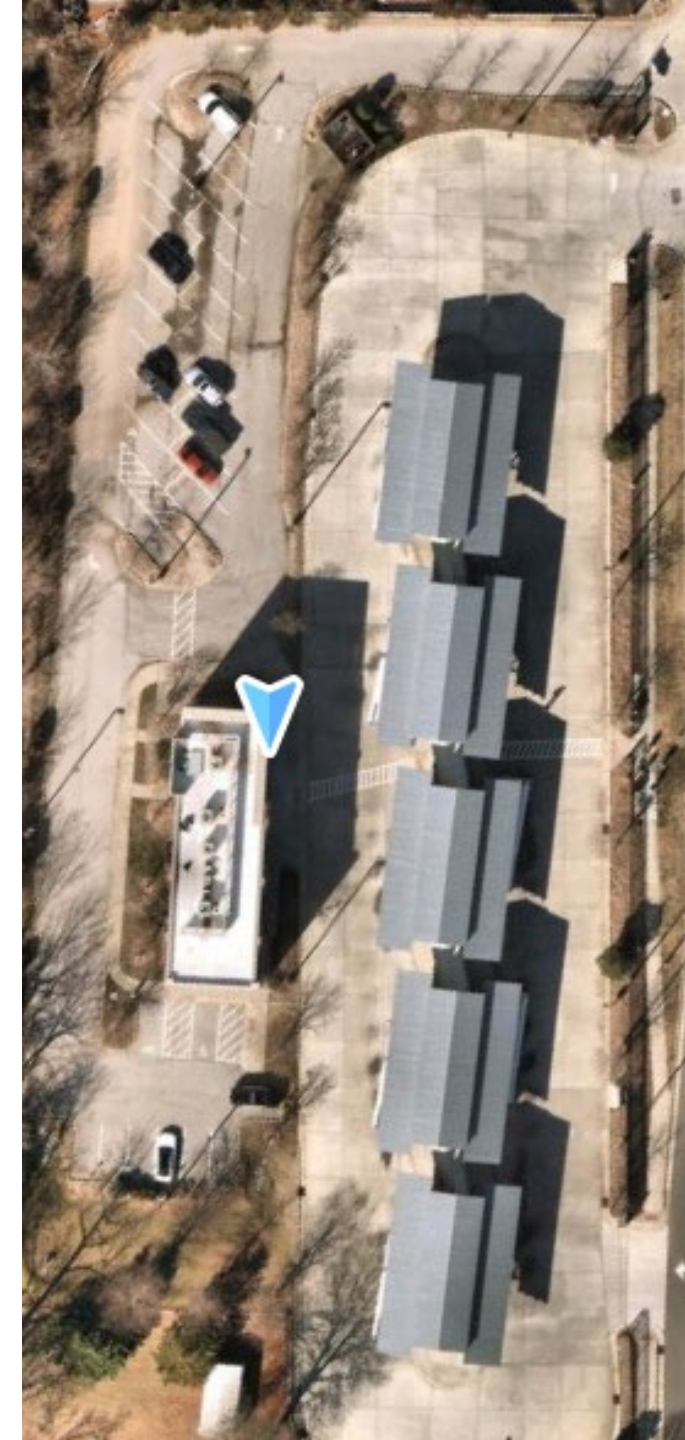
O&M

- .8 acres (.18 = building)
- 5.6 miles from Transfer Center
- Fleet:
 - 10 hybrid buses for fixed-route service
 - 4 LTVs and 3 vans for paratransit
- Building includes:
 - Admin offices
 - Paratransit Dispatch
 - Maintenance facility
 - Wash bay area



Transfer Center

- 2 acres (.06 = building)
- 5 covered platforms
- 10 sawtooth bus bays
- Building includes:
 - Customer seating
 - Customer Service Agents
 - Employee break room
 - Police substation
 - 20-person conference room
 - 4 admin offices
 - Multiple restrooms



CARY - GOCARY

O&M

- Current Site
 - 3 acres (.5 = building)
 - Facility Sq. Ft. = 17,920
 - 32 Fleet Vehicle Spaces
 - 2.1 miles from Transfer Center
- Proposed Site
 - 5.5-acres
 - Facility Sq. Ft. = 50,260
 - 20,000 for admin spaces
- Fleet:
 - 29 vehicles?
 - 9 fixed-routes
 - Paratransit



Transfer Center

- 3.7 acres (.24 = building)
 - Includes Amtrak
- 1 large covered platform; two small shelters
- Building includes:
 - Waiting room
 - Restrooms
 - Amtrak services

ASHEVILLE - ART

O&M

- Current Site
 - 3.4 acres (.6 = building)
 - .7 miles from Transfer Center
 - Building can accommodate 23 vehicles with 5 vehicles outside
 - Includes some staff offices
- Potential Future Site
 - Recommended 8 – 10 acres



Transfer Center

- .5 acres (.05 = building)
- 8 – 10 covered bus bays
- No parking
- Building includes:
 - Restrooms
 - Indoor and outdoor seating
 - On-duty information assistant



HIGH POINT TRANSIT

O&M

- 3.2 acres (.45 = buildings)
- .5 miles from Transfer Center
- Buildings includes:
 - Four bays: 2-in ground lifts, one above ground lift, and one tire bay
 - Admin office spaces
 - Dispatch and monitoring center
 - Operator break room space
 - Restrooms
 - Conference room facilities
 - Operations and call center for demand-response services

Transfer Center →

- 1.04 acres (.07 = building)
- 10 covered bus bays
- Uncovered layover area - up to 5 buses
- Building includes:
 - Waiting areas
 - Customer information and signage
 - Seating area
 - Restrooms
 - Vending concessions



AGENCY REVIEW TAKEAWAYS

- None of the agencies have a joint O&M and transfer center
- Distance between O&M and Transfer Center ranges from .5 – 5.6 miles
- Most Transfer Centers are in downtown settings
- Common Transfer Center Amenities – indoor/outdoor waiting space, customer service, public and operator restrooms
- **5 acres** as starting point for shared OMF and transfer center site search
 - 5 acres would also be sufficient for an O&M facility shared with another public use
 - Today's discussion will help further refine this estimate

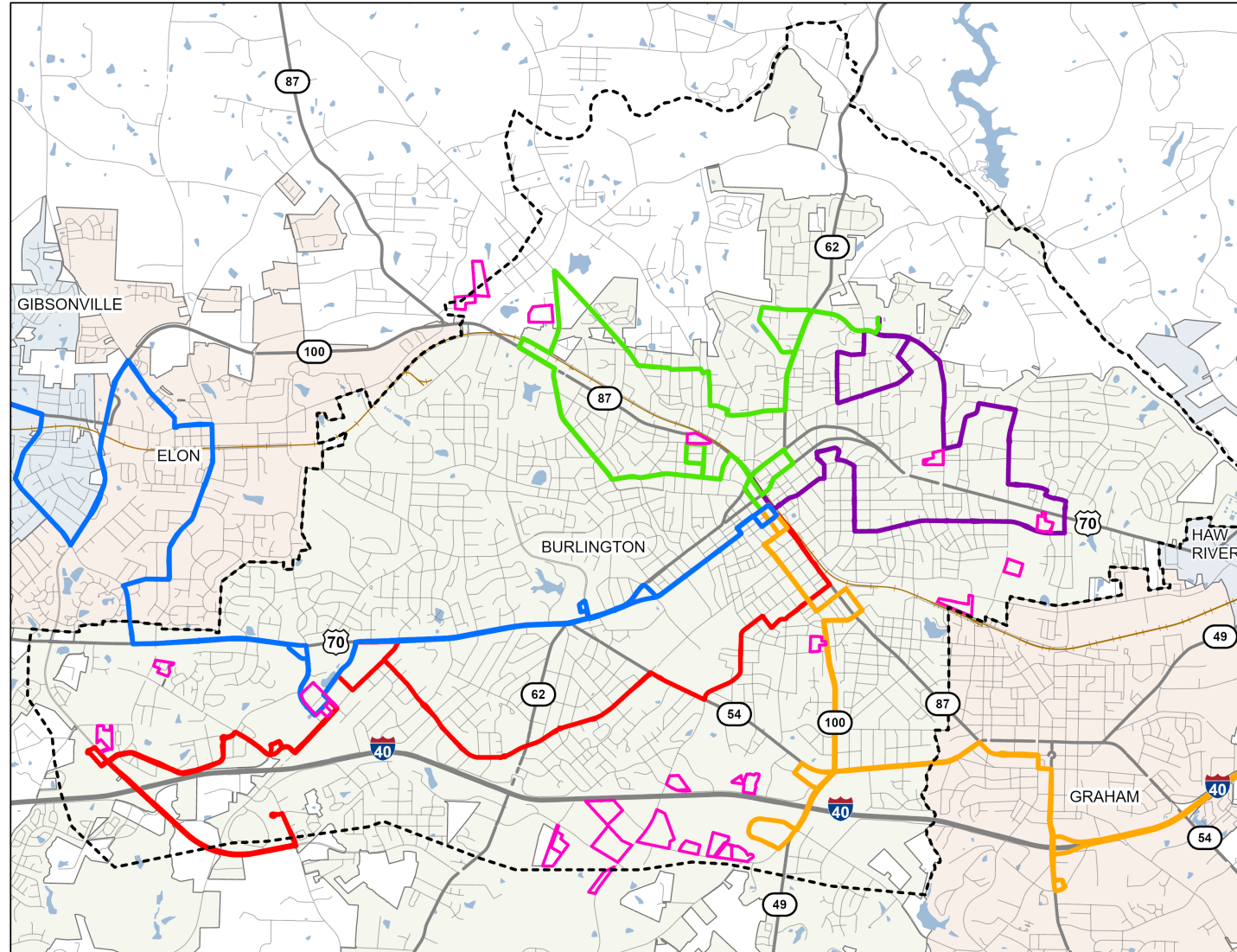
ROUND 1 SEARCH CRITERIA

- **Zoning**
 - Remove parcels with prohibitive and conditional zoning
- **Environmental features**
 - Remove wetlands, floodplains, and stream buffers to identify developable land
- **Minimum acreage**
 - Remove parcels too small to develop – Minimum of 5 acres



ROUND 1 SEARCH RESULTS

- 24 parcels



VISIONING QUESTIONS

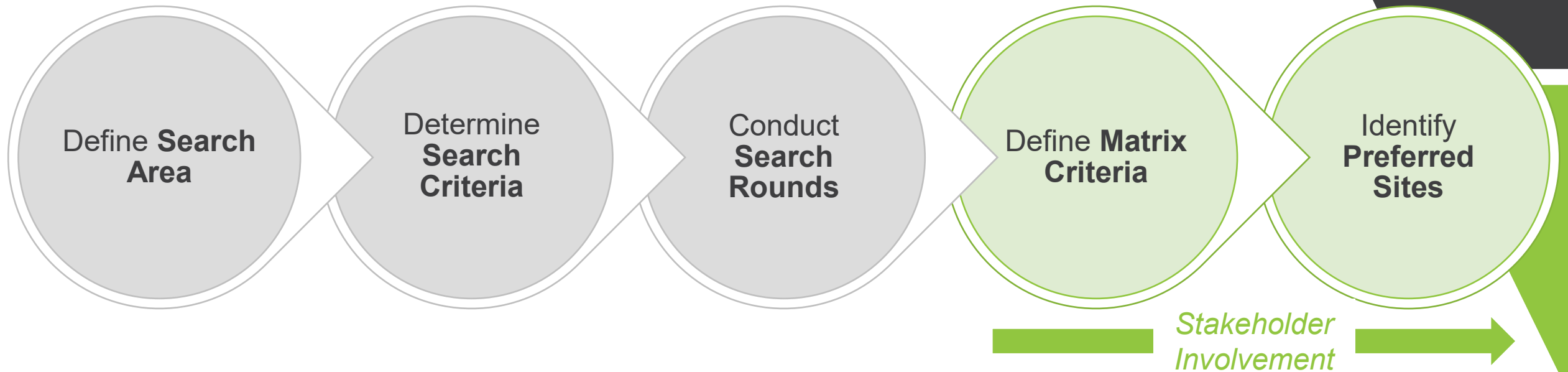
- O&M Facility
 - What year is Link building towards?
 - How often do you recompute for operations?
 - Do you plan to have administrative space in the O&M facility? If yes, how much?
- Transfer Hub
 - Janitorial closet
 - IT closet – message boards, signage, speakers, cameras
 - Transfer hub staff
 - Restrooms – customer and/or operator
 - Breakroom
 - Kiss and ride
 - Parking for supervisors
 - Bays for other agencies (PART, GoTriangle, etc.)
 - Park and ride
 - Multimodal connections

POTENTIAL MATRIX CRITERIA

- **Operational Efficiency**
 - Travel time from current routes
- **Viability/Ease of Acquisition and Constructability**
 - Estimated market cost
 - Existing use on site
 - Listed for sale
 - Planned for redevelopment
- **Opportunity**
 - Public/partner agency ownership
 - Surrounding land use
 - Proximity to planned/potential development
- **Accessibility***
 - Proximity to jobs, total population
 - Access to sidewalks, public facilities, key destinations
- **Community***
 - Minority population
 - Low-income population
 - Zero-car households
 - Number of businesses, services, housing, other establishments

*within X proximity. To be discussed with staff.

STAKEHOLDER INVOLVEMENT



NEXT STEPS

- Finalize Round 1 Search Criteria
 - Minimum acreage
- Develop Site Evaluation Matrix Criteria
- Identify Stakeholders

THANK YOU!



Kimley»Horn